



# DEPARTMENT OF PSYCHIATRY

## Grand Rounds

### DISCLOSURES

No Planning Committee Member has any financial interest or other relationship with any manufacturer of commercial product or service to disclose: Jamie Dowling PhD, Victoria Kelly MD, Kimberly Hunter PhD, Alina Rais MD, Tom Fine LPCC-S, Richard Baron LISW, Micheal'e Hands.

### TARGET AUDIENCE

100 physicians, residents, students, staff, and guests

### CONTACT

[jamie.dowling@utoledo.edu](mailto:jamie.dowling@utoledo.edu)  
[victoria.kelly2@utoledo.edu](mailto:victoria.kelly2@utoledo.edu)  
[micheale.hands@utoledo.edu](mailto:micheale.hands@utoledo.edu)

### ACCREDITATION STATEMENTS

**Physicians (CME):** The University of Toledo (UT) is accredited by the Accreditation Council for Continuing Medical Education (ACCME) to provide continuing medical education for physicians that are UT Faculty or staff only. UT designates this live activity for a maximum of 1 AMA PRA Category 1 Credit™. Physicians should claim only the credit commensurate with the extent of their participation in the activity. To receive CME credit for this session, attendance must be verified, and online evaluation must be completed.

Participants are required to attend virtually (not just via telephone) and check-in at the time of the event with [Event ID 17408](#) either via <https://utoledo.cloud-cme.com> or text the Event ID to [1.855.841.5132](tel:18558415132) (if this is the first time using the text check-in, participant must first text an email address to complete registration).

**Other Clinicians (CEU):** CEU credits are able to be provided for UT faculty / staff only. UT Department of Psychiatry is approved by the Ohio Psychological Association to sponsor continuing education for psychologists. UT Department of Psychiatry maintains responsibility for this program and its contents. The State of Ohio Counselor, Social Worker, and Marriage and Family Therapist Board has been requested for approval of 1 hour of Continuing Professional Education for Social Workers and for Counselors.

To receive CME credit for this session, virtual (non-telephone only) attendance must be verified for the duration of the session, and online evaluation must be completed, at <https://www.surveymonkey.com/r/20220929>.



### PRESENTATION INFORMATION

**Date:** Thursday, September 29, 2022

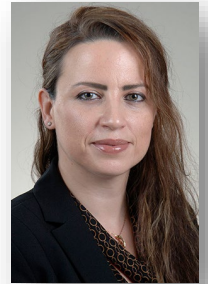
**Time:** 12pm to 1pm

**Title:** Deciphering Autism Biotypes by Adopting Modern Machine Learning Approaches

**Presenter(s):**

**Elissar Andari, PhD**

University of Toledo College of Medicine & Life Sciences  
Department of Psychiatry  
Assistant Professor



**Speaker(s)' disclosures:** The speaker does not have any financial interest or other relationship with a manufacturer of a commercial product or service to disclose. There may be discussion of off-label uses of medications and/or therapeutics.

### LEARNING OBJECTIVES

1. Define heterogeneity in ASD at the behavioral and biological level
2. Present machine learning approaches to classify ASD and Neurotypicals
3. Identify relevant ASD biotypes

### 3. HOW TO JOIN

**Join by WebEx:**

Weblink: <https://utoledo.webex.com/meet/victoria.kelly2>

Or Call in: 1.415.655.0002 then Access code 737 891 290  
(CME / CEU cannot be provide to UT faculty if call-in only)